

PULP, PAPER AND WOOD PRODUCTS

Where America Gets Its Timber



The fast-growing pulp, paper and wood products industry comes to Louisiana, where almost half of the state is covered in forestry, to keep up with demand. Companies in Cleco regions have access to the raw materials, multimodal transportation, reliable power and a large population of manufacturing professionals well-equipped to do the job.

NOTABLE INDUSTRY EMPLOYERS



Abita Springs, LA



*Bogalusa, Campti,
Lafayette, Mansfield,
Springhill, LA*



Olla, LA

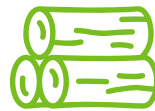


*Alexandria, Chopin,
Oakdale, LA*

COMPETITIVE BUSINESS LANDSCAPE



63,358 regional industry employees
JobsEQ



48% of state area – **3.8M acres** – covered by forestlands
State of Louisiana Department of Agriculture and Forestry



900+ industry firms across 45 parishes in Louisiana
State of Louisiana Department of Agriculture and Forestry



Energy intensive production supported by Cleco's **reliable utility** services



Logistics network of six interstate highways, 30 inland and coastal ports and five Class I railroads

Richard Cornelison
Director, Marketing and Economic Development
405-823-4135 | richard.cornelison@cleco.com
clecodev.com

